

## **Installation of Jana2000/2006 for Windows**

### **Installation of Jana2006 under Windows2000/XP/Vista**

- Log in as Administrator and run the self-extracting archive janainst.exe. The installation consists in extracting files from the archive to the installation directory. Use simple destinations like c:\jana2006 or Program Files\jana2006, do not use Desktop.
- Still as Administrator set the system environment variable JANA2006DIR to the full name of the installation directory and (optionally) add path to jana2006.exe to the PATH variable. System variables are available for all users.
- Still as Administrator set "Full Access" to "Everyone" for JANA2006DIR directory. It sets the same permissions for all files in JANADIR and its subdirectories.
- Log in as an ordinary user and start Jana2006.
- Configure the program through Tools -> Preferences

### **Installation of Jana2000 under Windows2000/XP/Vista**

- Log in as Administrator and run the self-extracting archive janainst.exe. The installation consists in extracting files from the archive to the installation directory. Use simple destinations like c:\jana2000 or Program Files\jana2000, do not use Desktop.
- Still as Administrator define the system environment variable JANADIR to contain the full name of the installation directory and (optionally) PATH to jana2000.exe. System variables are available for all users.
- Still as Administrator set "Full Access" to "Everyone" for JANADIR directory. It sets the same permissions for all files in JANADIR and its subdirectories.
- Log in as an ordinary user and start Jana2000. During the first Jana2000 configures fonts (this is a black strip growing slowly in white window) and saves the results in JANADIR\jana2000.ini. Repeating the configuration at every start usually means missing write access for jana2000.ini file.
- Configure the program through Tools -> Preferences

### **Installation for Windows 95/98**

The process is similar to that described above unless the work with environment variables and file access. See below for the explanation.

### **Environment variables**

In order to know the way to its system and temporary files Jana reads the environment variable JANADIR (for Jana2000) or JANA2006DIR (for Jana2006). The variable stores the path to the directory where Jana has been installed. The different variable names allow for installation of both Jana2000 and Jana2006 in one computer. The PATH variable can also contain the path to Jana executable but normally – when starting the program through a program icon or file association – it is not needed.

### **Environment variables and file access in Windows95/98/ME**

The environment variables are defined in c:\autoexec.bat. They are active after reboot of the computer. For Jana2000 installed in C:\jana2000 the corresponding lines would be

```
set JANADIR=C:\jana2000
set PATH=%PATH%;c:\jana2000;
```

The second line is optional.

Users of Windows95/98/ME have always the full access to all files in the computer unless they have active the read-only flag . This usually happens after copying files from CD. The read-only flag can be removed in File Properties.

## Environment variables and file access in WindowsNT/2000/XP/Vista

These systems establish user rights in a way similar but not the same like in UNIX. Environment variables are of two kinds: The *system environment variables* are available to all users and can be set by members of the Administrators group. The *user environment variables* belong to users. The new or changed environment variables are available to all new processes.

*Environment variables are set in the following order:*

- System variables
- AUTOEXEC.BAT variables (autoexec.bat is obsolete and should not be used)
- User variables

*How the path is built:*

The User path is appended to the system path. Then the path from the AUTOEXEC.BAT file is appended.

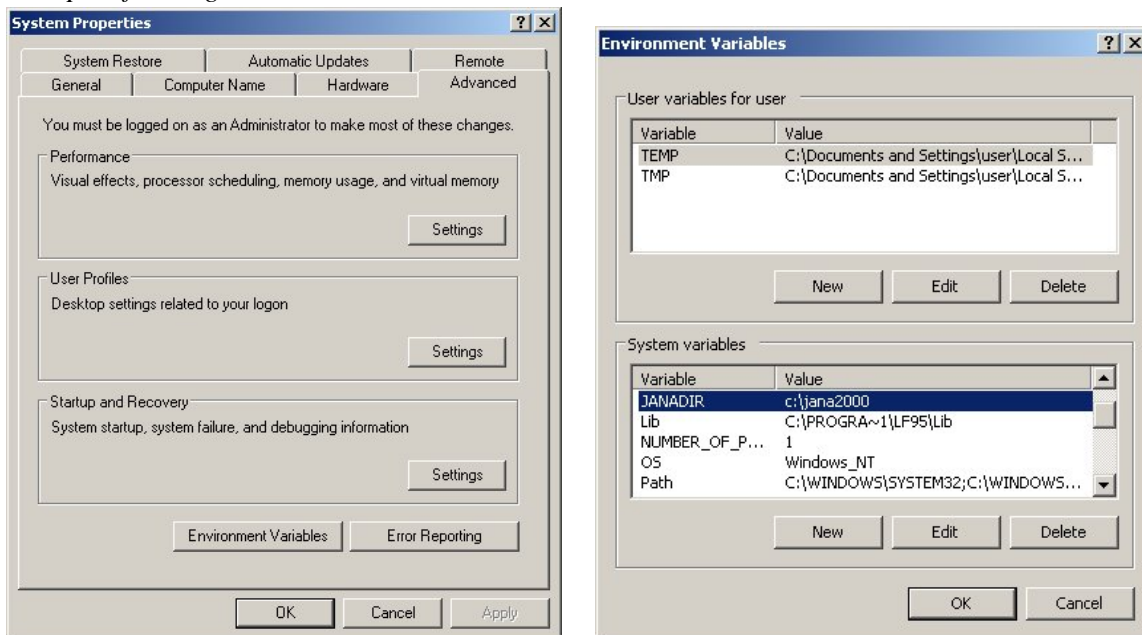
*Setting of environmental variables:*

Windows NT: Start -> Setting -> Control Panel -> System -> Environment

Windows2000: Start -> Setting -> Control Panel -> Advanced -> Environment variables

WindowsXP/Vista: Start -> Setting -> Control Panel -> System -> Advanced -> Environment variables

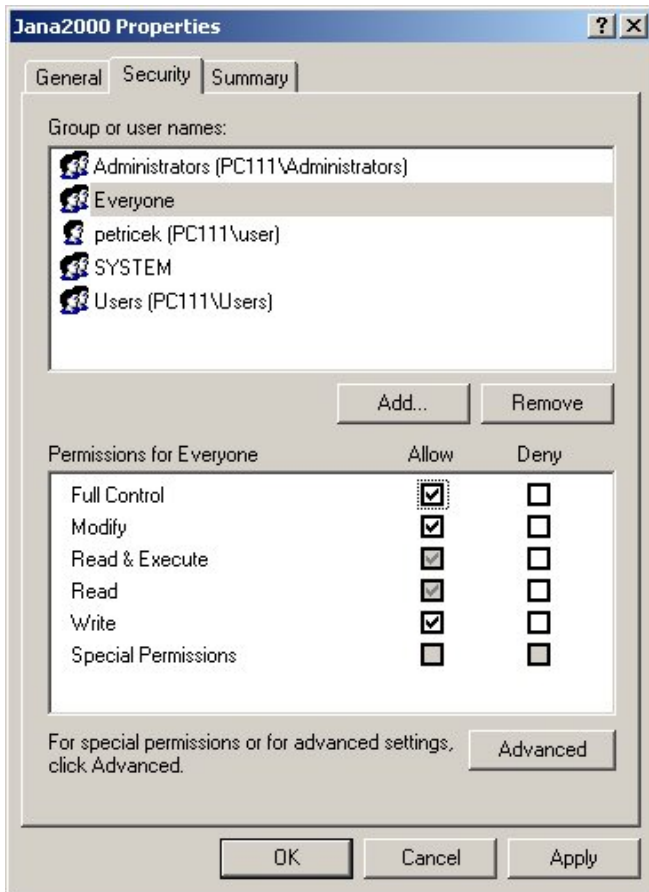
*Example of setting JANADIR under WindowsXP:*



### **File access**

The installation directory of Jana must have write access for all users. Directory and file permissions can be edited through File Properties.

*Example for Windows XP:*



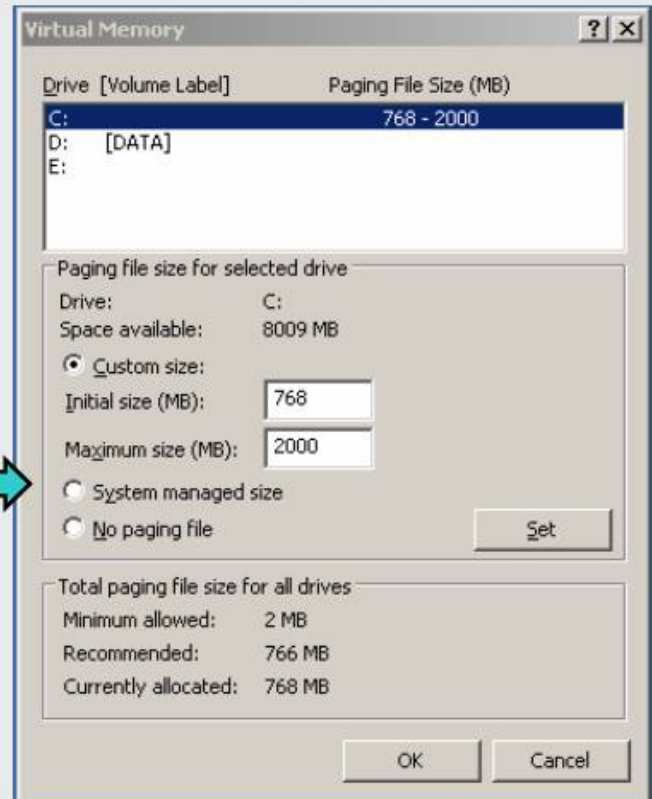
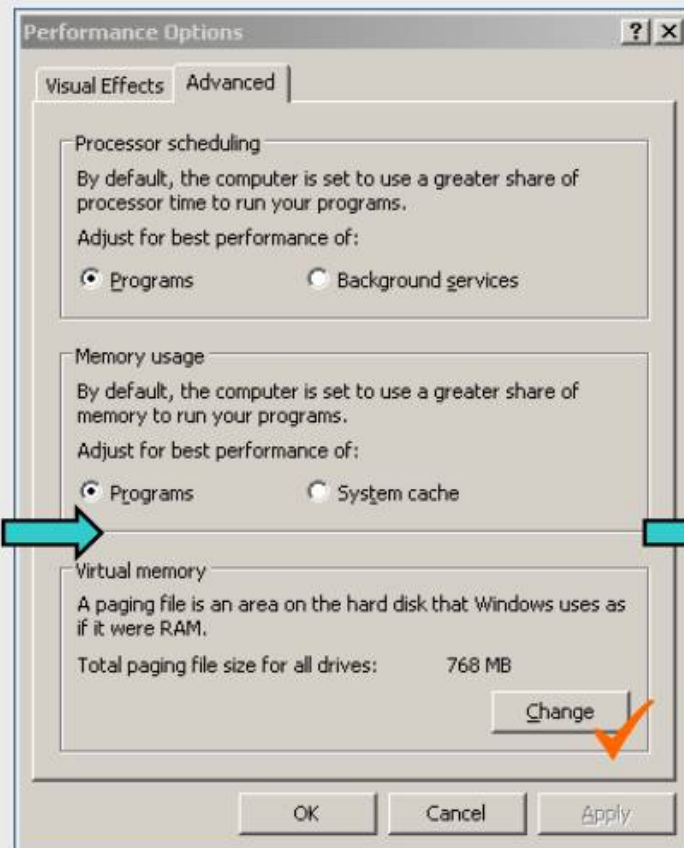
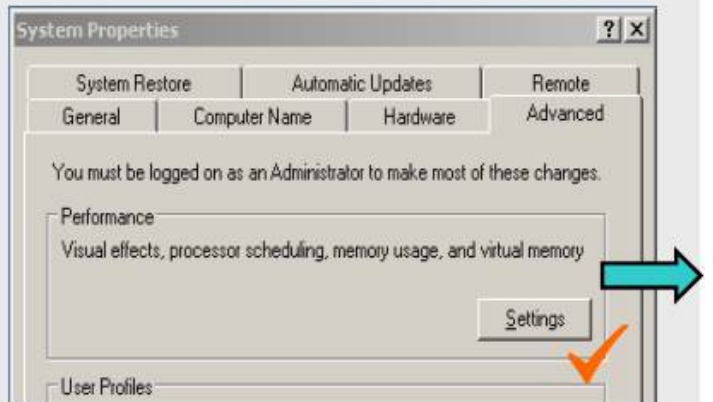
*The "Security" button shown in this figure is only available when "Use simple file sharing" in "My Computer -> Tools -> Folder options -> View" is unchecked.*

## Memory requirements of Jana2000

This does not apply for Jana2006 which allocates memory dynamically. Jana2000 – due to used programming language Fortran77 – allocates all memory at the startup. It uses about 40MB of RAM and reserves from 200 to 300 MB of disk space for the virtual memory. Sometimes startup of Jana2000 fails with message "There is not enough free memory to run this program" or "Problem in the pagination file" or confusing "Not a win32 application". This usually means insufficient disk space for virtual memory or too low virtual memory limits. Under Windows, the maximal and minimal size of the virtual memory can be adjusted. Here is an example for Windows XP:

## Setting of Virtual memory for WindowsXP

Control panel → System →



## Problem with font size in Jana2000

This does not apply for Jana2006. During the first run after installation, Jana2000 for Windows makes a test to determine proper size of the system font that will be used for the graphics interface. After finishing the test the results are saved in jana2000.ini in JANADIR directory. The test fails when *Clear type method* is used for smoothing edges of screen fonts under WindowsXP. The test relies on difference between dark text and white background which is confused with the Clear type method. The remedy for Jana2000 is using Standard method or disabling the screen fonts edges smoothing.

### Smoothing screen font edges under WindowsXP

